

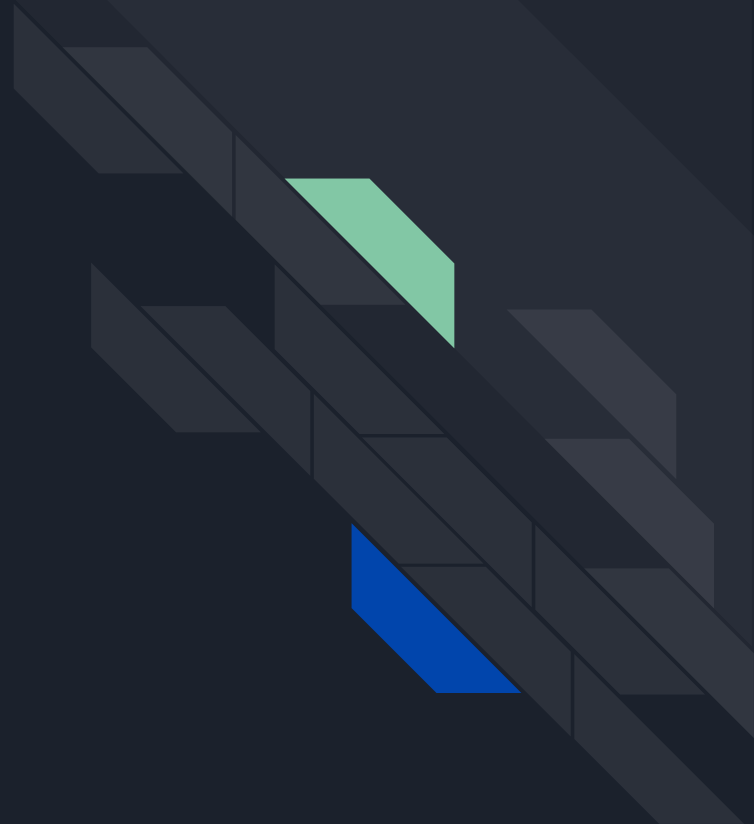
The background is a dark blue gradient. On the left, there is a large, semi-transparent circular graphic containing a detailed image of a circuit board. Overlaid on this and the top-left corner are two overlapping parallelogram shapes, one blue and one light green. In the top-right corner, there is a faint, grey, 3D-rendered pattern resembling a circuit board or a city skyline.

Inclusion of AI in Modern Days

Mikel Garcia
Urtzi Beorlegui
Alfredo Vallejo

Index

- Introduction
- Machine Manipulation
- Machine Ethics
- Machine Bias
- Conclusions

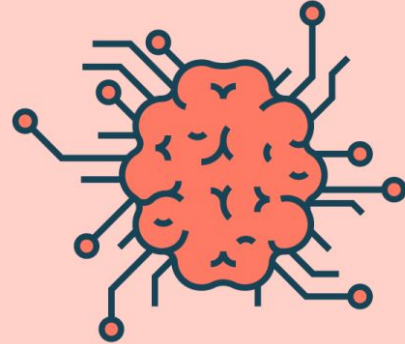


Introduction

Ai has entered into our lives

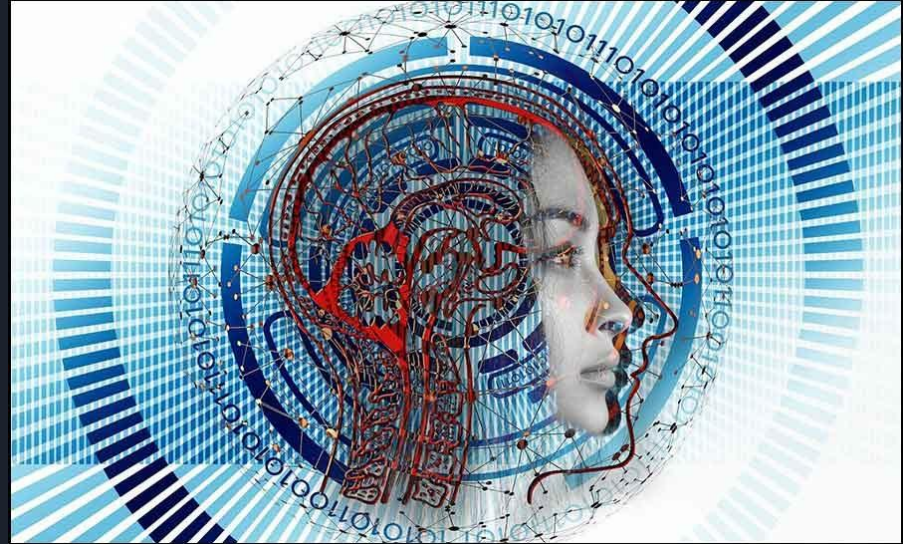
What we'll be focusing on?

Why?

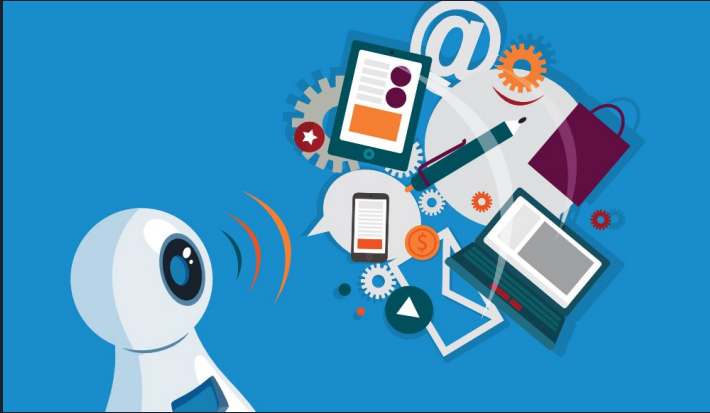


Machine Manipulation

- What do I mean by manipulation?



How does it work?



Data extracted from our use

Profile about our likes and dislikes

Advertising we're likely to click on

- Used for mobile games
- Was designed to create offers tailored to each player
- The offers were designed to appear at the times that the player was most likely to buy them



- Founded by far right ideologues
- Used to influence elections all over the globe
- It spread misinformation to those most likely to believe it



Cambridge
Analytica



Machine Ethics

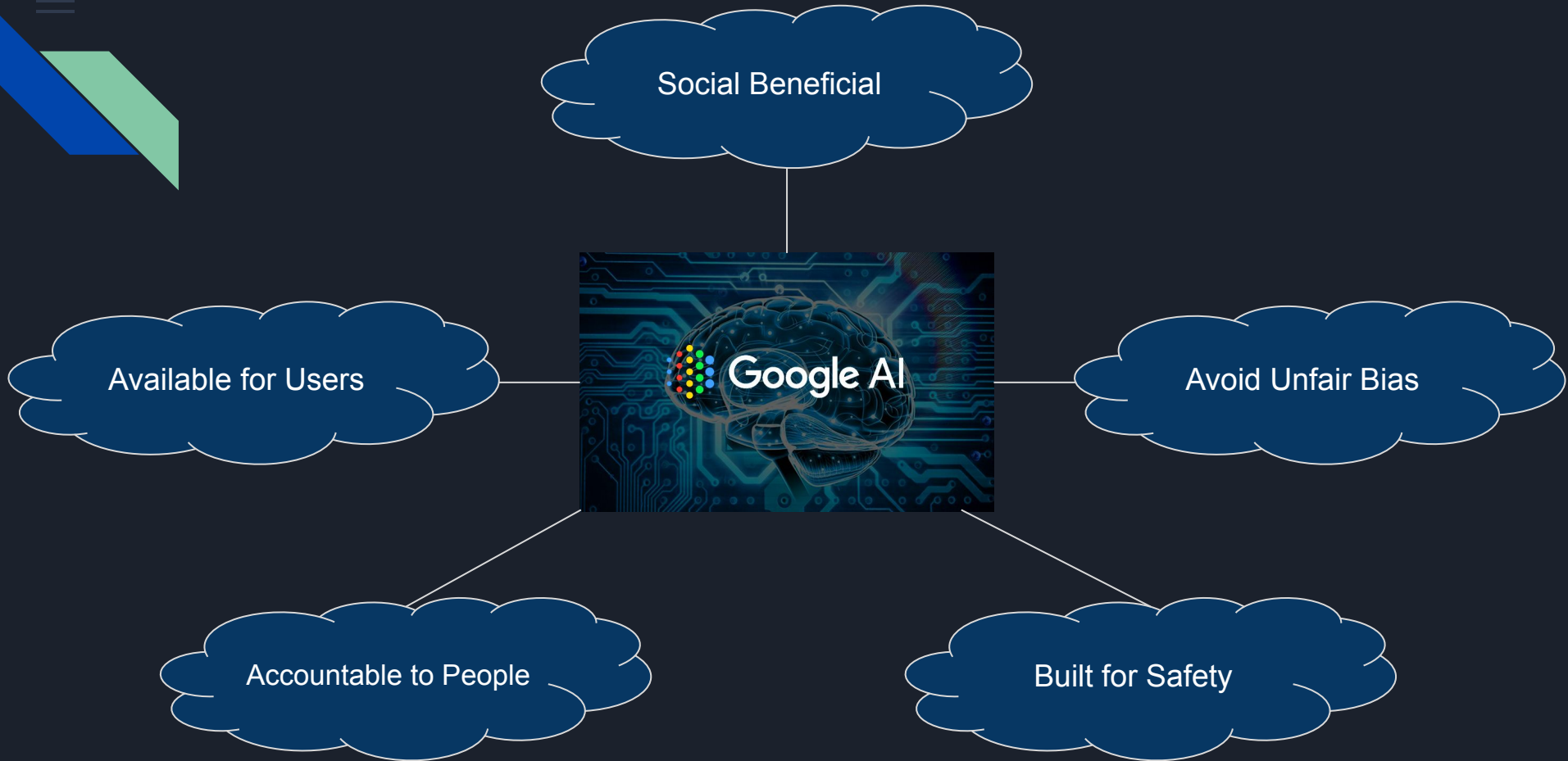
- AI vs Dilemma
- Machine Ethics
- Isaac Asimov



¿What Behaviour?



1. Human agency and oversight
2. Technical Robustness and safety
3. Privacy and data governance
4. Transparency
5. Diversity, non-discrimination and fairness
6. Societal and environmental well-being
7. Accountability



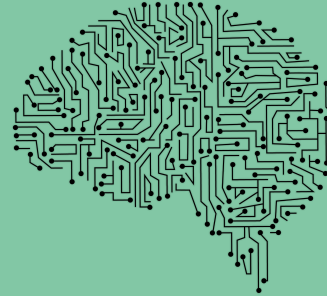


Bias in ML

Prejudices

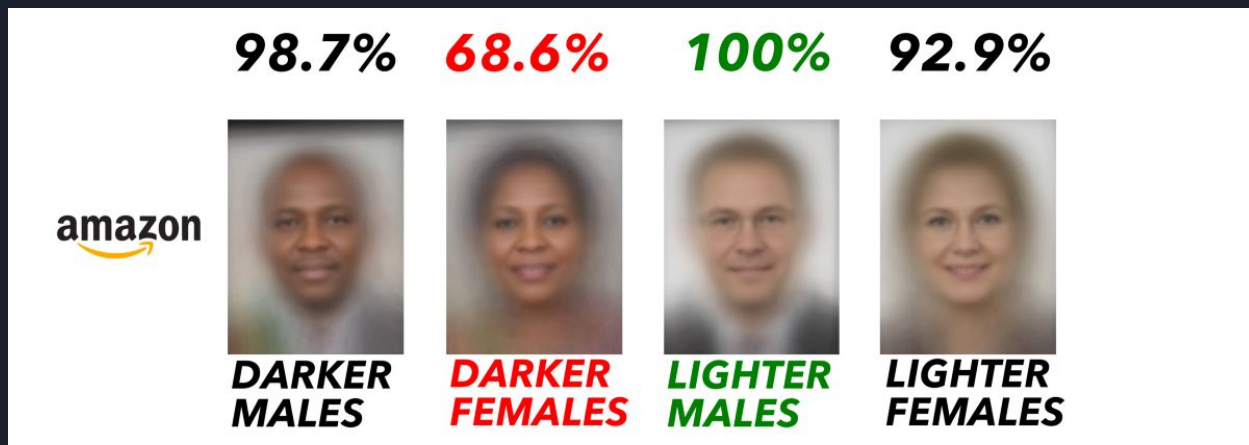


Racism
inequality



Data matters

- There is more images of white men
- The data we use has connotations
- AI does not learn what the real world is like



Decision making

AI will decide many things in the future:



To whom to give a loan

The cost of insurance

To whom to grant a scholarship

The hospital priority list





Conclusions

AI can make our lives easier,
it is up to us to decide what use we make
of it

